

# The GAZETTE

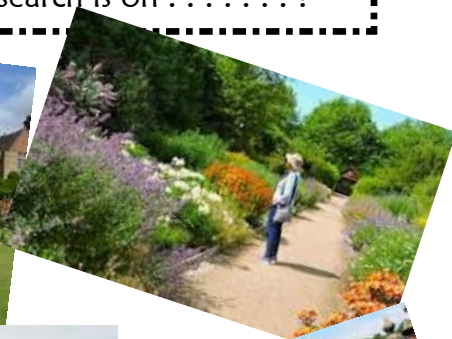


**Issue No 98**

**May 2026**

## Garden Group through the ages

Co-ordinators come and co-ordinators go, but some stay around for a long time, and show huge commitment to Bu3a members. And some are a hard act to follow. The very first, Robert Robinson, served from 1998 to 2001, followed by Lyria Jones and Wendy Kirton to 2005. Then it was Trish Simmonds, Kate Eite and Irene Yarnell, through to 2010, when Hazel Adams-Randon and Corinne Watson took over. By 2014, the group had folded (probably due to a lack of help with organisation of activities) and though attempts were made to restart in 2014, it finally relaunched in 2016, when Anne Peller persuaded Sheila and Viv to resurrect the defunct Garden Group, when she did her Chairman's survey. And now the search is on . . . . . ?





# **CHAIRMAN'S REMARKS MAY 2026**

I have just returned from a very pleasant 12/12 Lunch at the Lathkil Hotel. Good company, good food, much chatter and great views across the countryside. The Group Co-ordinator, Angus Stokes, established the group two years ago and it has ticked over very successfully ever since. Thanks, Angus. Bu3a groups are organised in different ways and I well remember Angus letting me know that he was happy to take a leading role so long as there was a committee of just one!



*My favourite view towards Youlgrave. Ed*

Angus's invitation to The Lathkil suggested members: "Bring a friend who may be interested in Bakewell u3a activities". We all know that a most effective marketing strategy for voluntary organisations is "word of mouth" and the invitation from Angus underpins this pro-active and open approach which we could adopt more widely. If you have a guest you wish to invite to Bu3a then check with your Group Coordinator to see if there is room for additional members. A word of caution - for insurance purposes, u3a

guidelines allow just a couple of taster sessions before we have to insist upon guests becoming members.

While on the subject of group co-ordinators. Sheila Sidebottom and Viv Stephenson will stand down from their role in the Houses and Gardens Group. Similarly, Ainslie Kelly will cease to lead the Cooking By Men Group. Over the years they have been at the helm of very active and successful groups and we are indebted to them for their commitment. Without doubt, Group Co-ordinators provide the backbone of the u3a movement and it is incumbent on us all to support them in their role and, whenever possible, to agree to accept a degree of responsibility.

The AGM in March was well attended. There is always a little trepidation about whether we will have a quorum (10% of membership). Fortunately this was not an issue and we were able to deal with the Agenda items quite quickly without, I trust, neglecting their importance. Following the AGM and Meg Laird “tea and cakes”, member John Hopkins gave a fascinating account of his time spent in the UAE as part of the School Inspection team. Recently I was mildly surprised to hear that our youngest granddaughter attends a Bristol Primary school where children come from more than thirty different language groups. But, just to keep things in perspective, John cited a school in Dubai attended by more than one hundred different nationalities. This was an excellent presentation giving a detailed insight into a totally different culture.

In my last piece I said that I would be handing over leadership of Bu3a in July. I am very pleased to report that there is an offer from Bernard McMahon and David Thornton to share the responsibilities associated with the roles of Chair and Vice Chair. I am absolutely delighted with this arrangement and know that Bu3a will continue to progress under extremely competent leadership.

***Peter Holt, Bu3a Chair***



# Editor's Ponderings

Every so often, I have a trip to Chesterfield to meet up with my sister and have a lovely catchup. Part of the trip is always a wander around TKMaxx to see what catches our eyes. Can I be alone in loving my meander around the different sections of retail therapy, and almost always finding delicious items to ponder. I am quite good at putting things back down and walking on, but I'm also good at deciding that some items should be placed lovingly into my trolley. The most recent is a decorated watering can, not too large, and perfect for using in my conservatory - instead of the serviceable plastic can which has nothing in its favour except that it doesn't leak. The new one will water, probably, 3 times as many plants, and though that makes it heavier at the start, watering the plants soon lightens it. And it's beautiful and is already bringing me joy.



As is the tall kitchen waste bin, which matches my pale green kitchen colour almost exactly, which I didn't NEED, but lusted after. And it's soft close, so posh, after a lifetime of clonking lids. Another recent purchase which is bringing me more joy.

A while ago, I spied a set of metal shelves with tiled surfaces, perfect for bringing a bit of elegance to a nasty, untidy corner of my conservatory. Out went tumbledown, old wooden shelves and a little rotting cane corner unit, a thorough clean, and elegance settled into the corner instead. Joy and delight every time my eyes alight on that corner.

I DID resist a lovely ceramic salad bowl, telling myself I'd already bought quite enough bowls from TKMaxx, and, anyway, the lovely watering can was already sitting triumphant in the trolley.

I believe everyone needs a bit of joy sometimes.

**Ed**



The next Meg Laird  
**Thursday, 30 July**

at the Medway Centre, 2.00 for 2.15 pm start

## **Jonathan Mallalieu returns**

**A Meg Laird gathering with a difference -  
our Summer Buffet, with piano  
accompaniment from Jonathan Mallalieu**

Jonathan is the music teacher at the Medway Center, giving lessons to all ages in piano, guitar and singing. He is the house pianist at Biggin Hall Hotel, playing there two or three times a week, during dinner. He also plays at weddings and private events. He specialises in the great American songbook: Gershwin, Cole Porter, Richard Rodgers, Irving Berlin, Hoagy Carmichael but also Elton John, Beatles, Joni Mitchell etc. **Ahead of the event, if you have any music requests, let me know (01629 636477) and I'll pass them on to Jonathan. What a treat we have in store. Book the date now.**

*NB Can you see the wonderful BU3A Millenium Embroidery on the wall behind Jonathan? I think I'm more amazed at the talent of those embroiderers every time I look at it. Take a look some time. Ed*



**£3 entrance.  
Non-members are most  
welcome, bring a friend.  
And this time we'll have a  
little afternoon tea  
midway through the  
afternoon.**

I happened to meet Mr & Mrs Naylor in a supermarket car park, we talked of the Gazette, and Rick made a very reasonable suggestion - that I put a copy date in this Gazette for the next one. Thank you, Rick, a good idea. *Ed*

**So - August Gazette copy date -  
Saturday, 18 July**

## **My great big thank yous - to:**



Rick Naylor, who had written a piece, unbidden, about his colour blindness for the February Gazette. Our car park meeting led me to ask him if he had any other ideas for some Gazette writing. Rick then sent me something which he described as “possibly, a load of old waffle”. I replied that I wish other members would send me their “loads of old waffle”. See his load of old waffle on Page 36.

I’m always so grateful to members who contribute. Marie Howes has written several biographical pieces, very much appreciated - see her “Peter Holt” piece on Page 11. I’ve loved my contact with Sheila Sidebottom over the last 10 years, always so positive and willing, sending her pieces about the Garden Group’s programme.



I’m grateful to Anne Gould and Anne Peller for their Poetry suggestions every issue - always a good guide towards interesting poetry. I know I can always rely on Alison Stuart for all her efforts on the gardening front, she’s full of enthusiasm and ideas.

And then, of course, there’s Irene Yarnell, our Cookery Corner lady; again, full of enthusiasm and idea - she is such an encouragement to me. I must try her Boston tarts. **Ed**

*(If I’ve missed anyone, my apologies, I’m working to a deadline. Ed)*



# Bu3a Annual General Meeting 2026

A very good number of our members put the AGM date in their calendars and arrived at the Friends Meeting House in plenty of time for a very well attended AGM. All the usual business went through efficiently, scones with jam and cream seemed to go down quite well in the interval, and the talk by John Hopkins, about Working in Dubai Education went down even better. It was really interesting, members had lots of questions and John's slides were quite eye-opening.



## Our Charity Coffee Afternoon So how DID we do?

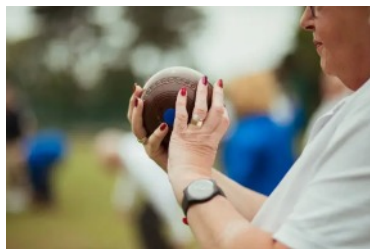


CANCER  
RESEARCH  
UK

As reported in February we did very nicely, raising £520 at our Charity Coffee Afternoon. Cancer Research acknowledged our donation with a very nice letter, telling us that our donation would fund the employment of a Research Assistant for a whole week.

## Bakewell u3a Bowls

If you've always fancied giving bowls a try, now's your chance. Come along and join us on Tuesday mornings at Bakewell Bowls Club. We welcome bowlers of all abilities.



We aim to start at 10.30 am, depending when the mowing is complete.



If you would like more information please contact Mary Creswell 07811 702838, or just turn up one Tuesday and have a go.

***Mary Creswell***

That's 24 points for Schumacher and 23 points for Hill, so there's only one point between them, if my mental arithmetic is correct.

***Murray Walker***

# *An Interesting Programme ahead*

Bakewell U3A Chatsworth group continues to enjoy a varied programme of speakers. With 6 meetings per year, held mostly at the Friends Meeting House in Bakewell, but with occasional talks



at Chatsworth itself, the invited speakers attract a sizeable and interested audience who are keen to learn more about Chatsworth and related topics.

Our next talk will be on **Wednesday, 13 May**. We are delighted to be heading to Chatsworth for this event. Steve Porter, Chatsworth House Head of Gardens and Landscape, will explore the long history

of water development, use, and management at Chatsworth, focusing on how water has been harnessed over the centuries. From historic watercourses and reservoirs to more recent restoration efforts, Steve will look into the historical significance of Chatsworth's water systems (***Overleaf***)



and the steps taken to uncover and restore lost elements. The talk will cover current strategies for managing water, including the challenges of maintaining reservoirs, balancing wildlife conservation, and maintaining water systems, along with the Cascade Restoration Project, its aims and wider benefits. Tickets are £10 and available by following this link [www.ticketsource.com/bakewell-u3a](http://www.ticketsource.com/bakewell-u3a).



Future meetings, which take place on alternate months, include **Wednesday, 15th July** - House of Stories, which will focus on the current house exhibition; **Wednesday, 16th September** when Simon Seligman returns after his excellent talk last year, and **Wednesday, 18th November**, when we will hear

about various restoration projects around the house and estate.

In addition to the indoor meetings there are 2 free walks on the estate, planned for June, led by members of u3a. On **3rd June** there will be an early start where members will be led around the woods for a bird walk, and the walk on **17th June** will focus on conservation work both past and present - both Wednesdays.

For more information about times of meetings and details of the speakers and talks please look on the Bu3a Chatsworth page on the Bakewell u3a website. **Jane Thornton**

*(And thanks to Bernard McMahon for 3 watery photographs)*

# Getting to know . . . Peter Holt

After three years as chair of Bakewell u3a, our hard-working and dedicated chair will step down. Under his quiet guidance and encouragement, Bu3a has made progress. Apart from his presence at general meetings, his own Bu3a interests have centred on Cooking By Men and the establishment of the new Chatsworth group.

Outside the u3a he is a keen gardener, growing flowers for his wife,



Iris, to arrange and, last year he grew the longest bean in the Froggatt Horticultural Show. But behind this quiet, unassuming presence is a fascinating life trajectory, which Peter has been willing to share with us, at least in part: in a short Gazette article, it is impossible to convey its full richness.

Like many other members of Bu3a, Peter is not a native of Derbyshire, but was brought up in northern Lancashire. His parents were of farming stock and, in addition to working on the farm, they ran the local pub. The oldest of four children, he describes his childhood as secure, almost idyllic. Moral principles were instilled: stay out of trouble, stay within accepted behaviours and work hard. The surrounding countryside, with its open fields and natural boundaries of rivers, was the playground for him, his siblings and friends. Scrubbed and smart - Sunday church was a must - until his teenage years. But even at an early age, it was school and learning which were Peter's passions. He did not see a future in farming, nor in running a village pub.

Secondary education began in a unique way: Peter was the first intake of a brand-new secondary modern school. The headmaster, Geoffrey Dent, was determined to make it a huge success, to create a solid educational structure and, using some 'invented traditions', to establish practices more usually found in grammar **(Overleaf)**

schools. Peter describes it as a ‘launching pad’ for his future. As farming was not for him, he set his sights on becoming a teacher, and, with the head teacher’s encouragement, obtained a place at Edgehill Teacher Training College. So began a life of learning and teaching. Post college, Peter’s first appointment was not in a school but as an “Instructor Officer Under Training” at Britannia Royal Naval College, Dartmouth. He was then posted to HMS Ganges in Suffolk, teaching basic subjects - and rugby - to young naval recruits. This photograph shows recruits fearlessly “Manning” the 143 ft mast - a celebration enacted at the end of each term for their proud parents and VIPs. John Noakes from Blue Peter attempted to become the “Button Boy” whilst Peter was at Ganges. A wonderful video of this ceremony can be seen on YouTube (see <https://www.youtube.com/watch?v=sSuZXIUxbk>). During this time he married Iris, whom he had met at Edgehill, and they started their family. After a short service commission in the Royal Navy, he transferred to The Royal Army Educational Corps with assignments in Beaconsfield, Oswestry, Lancaster, Germany (Hanover) and finally a posting to the academic staff at the Royal Military Academy, Sandhurst.



During these years, Peter had not only grown in an understanding of how these institutions worked, but had also developed his own intellectual abilities, acquiring three academic degrees en route.

Leaving the armed services behind, he joined the Home Office to work at the Police Staff College, Bramshill, helping senior police leaders to learn and apply new skills. He was able to apply much of his learning when he became Learning and Development Manager within Wiggins Teape, a paper manufacturing and distribution company. When the company moved to France, Peter decided to work independently and for 20 years was a consultant in leadership training. Each posting brought with it growing awareness for Peter of the need for leadership, and the qualities that required. This was not just academic teaching, but more related to empathy, behavioural and pastoral skills. He had observed his mother, serving at the bar in the family pub, as she listened empathetically to the stories told her by loyal customers, and he later recognised the importance of this in his own work. Leadership is not about banging the drum and saying look at me. It can be a much quieter and more subtle and considered engagement with people.



Peter and Iris moved to Baslow to be near to their daughter and her family. They became very involved in local activities, such as the Baslow Sports Field, running

an allotment, walking, and a supper club. The u3a also became part of their life. When Peter became chair of Bu3a, the local interests had to be 'jettisoned', as he describes it. Their loss was our gain. For three years, he has led from behind, so to speak, encouraging others to perform their tasks as well as they can. For this, we offer him our heartfelt thanks. **Marie Howes**

# INTERESTING AND INFORMATIVE

On 3 March, Bakewell u3a environment group, together with Bakewell Climate Action and Marches Energy Agency (MEA), hosted a discussion of ways to improve the energy efficiency of our homes and moderate heating costs, at the Friends Meeting House. The meeting was very well attended by our members.



Householders/Members described their experiences - good and frustrating. Robert of MEA told us of the help this charity offers householders to avoid frustration and achieve improvements.



*Denise's solar inverter and battery, in her garage*

This help can include preliminary advice by telephone, a competent survey of your home and recommendations on cost-effective improvements. Robert pointed out that moderate objectives are appropriate for many existing homes in Derbyshire and advised that the building fabric be assessed before decisions relating to heat sources are made.

The householders who contributed had sought lower heating costs, to improve comfort and to minimise their contribution to climate change. These objectives have been achieved. The initial

cost can be significant but can be offset by lower running costs and by several income streams which are available to those who install batteries and/or pv panels. Such equipment is not a get-rich-quick tool but does enable us to avoid reliance on burning fuels, whilst gaining financial benefits over several years.

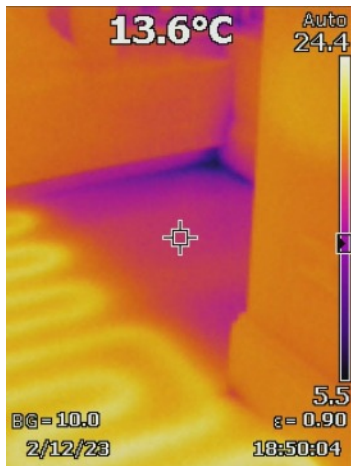
Members of the environment group are accumulating experience which group members are enthusiastic to share, particularly initial



*Some of the ins and outs of Alison's underfloor heating, and a thermal imaging photo of her floor*

and ongoing costs, income streams and savings, of temporary disruption, of space needed, both outside the home and inside, to accommodate equipment, of help from MEA, of installers and of running an electric vehicle on low-cost or zero-cost electricity. If you'd like to know

what a heat pump looks and sounds like, please ask the group for a visit to a home which has one. Bu3a has a thermal imaging camera



which can be used on behalf of members to reveal problems and successes with retaining heat in your home. MEA are able to advise on sources of cash (grants and loans), to guide householders on selection of contractors and to provide free advice specific to an individual home.

The discussion concluded with a summary of activity of Derbyshire Dales Community Energy which promotes larger projects.

**The environment group can be contacted by email to [environment@bakewellu3a.org.uk](mailto:environment@bakewellu3a.org.uk)**

***Helen Parker***



# News on the “New Groups” front

The **Sharing Gardens Group** has now had its first two “sharings”, in March and April.

## March - a visit to Alison Davidson’s garden

**She says:** It was a pleasure to show friends, old and new, around my garden on a beautiful sunny day, and I hope the weather continues fine for future months’ visits.

### Other members say:

Once everyone had arrived, Alison nipped into the house only to reappear in minutes with a tray of homemade goodies and most welcome coffee. Having settled down to enjoy ourselves, Alison then began to explain how she had tackled what was, at the beginning, a mass of undesirable vegetation, and how she began to make plans for her garden.

After her introductory welcome, we wandered round with her, listening to and being captivated by her enthusiasm, and the two hours we spent in her garden absolutely flew. A truly wonderful morning, Alison. Thank you. **Anne**



Wow!! What a garden. A sweeping drive with hellebores, white fuchsias, and so many daffodils of different types; a woodland area with newly planted native trees, an orchard, a pond, and a newly designed ornamental garden with curved paths, ornamental trees, shrubs and herbaceous plants. Two

acres, and Alison looks after it largely on her own. Thank you for sharing it with us, Alison. Your hard work and dedication were much admired by us all. Oh, and I loved the story of the two Muslim gentlemen who thought the garden was a public park and laid out their prayer mats on your lawn! **Val**

I found our visit to Alison's garden inspirational! It's a work in progress but its position is amazing with wonderful views over Bakewell. Had it been a complete jungle it would still be worth a visit for the views alone. But it is far from a jungle. Alison has done so much to restore it. Lots of bulb planting and pruning, and new trees, plus the development of a more formal space with winding paths and perennial planting. It's delightful . . . and there was coffee and cake on the patio in the sunshine! Perfect.



**Denise**

And God said, "Let there be light," but the Electricity Board said he'd have to wait till Thursday to be connected. **Spike Milligan**

*The guy who invented the first wheel wasn't up to much, but the one who invented the other three, now he was a genius.*

**Sid Caesar**

Any tool dropped while repairing a car will roll beneath the vehicle to its exact centre. **Murphy's Law of Car Repair**

Wood burns faster when you have cut and chopped it yourself.

**Harrison Ford**

When buying a used car, punch the buttons on the radio. If all the stations are rock 'n' roll, there's a good chance the transmission is shot.

**Larry Lujac**

Wouldn't it be nice if the wattage of a car stereo could not exceed the IQ of the driver.

**Robert Maine**



# And I heard every word

Booking speakers for the Meg Laird talks can be a bit scary. Sometimes, speakers come recommended, but even then, we're relying on someone else's idea of a "good" speaker. Sometimes, we just like the sound of a talk, which was the case with the Victorian Sewage talk, and luckily, on that occasion, he turned up trumps and was very good. And sometimes, we book a speaker who hasn't been recommended, who we like the sound of, and they turn out to be absolutely wonderful. I don't know how anyone else felt who heard Ashley Franklin speak to us in January, about his "Derbyshire Life," but I felt he was one of our best in a long time. And, importantly, for many of our members, we COULD HEAR HIM - every word. Even more important, what he was saying was well worth hearing.



He'd been a photographer and writer for "Derbyshire Life" for many years and his talk centred around the lesser known towns and villages in south Derbyshire which he'd researched, photographed and written articles about, along with really quirky stories - like Harry Webb and the Drifters, and their first public performance for £15, in Ripley - though by that time he'd been **(Last bit on Page 23)**



# Walking Programme February - June 2026

**All Walkers: please read -**

If you don't receive an email before the walk, or you are unsure whether it will be suitable for you, please contact the walk organiser for details.

**It is essential to get agreement before bringing a dog.** You need to tell the walk leader if you intend to walk, and **if you change your mind. Please check your emails on the day of the walk in case of change of plans.**



## **MONDAY WALK**

**Week 2 – Monday.** A walk of 3 to 4 miles at a gentle pace. Picnic lunch in summer and cafe or pub lunch in winter.



**Organiser:**  
**Sue Fordyce**

**Dates:** Mondays -  
11 May, 8 June,  
13 July, 10 August,  
14 September



## Details of our Group Activities - February 2026

**Please refer to Group web pages for more information, bakewell.u3asite.uk**

| Subject             | Co-ordinator        | Phone | Meeting day               | Time           | Location   |
|---------------------|---------------------|-------|---------------------------|----------------|--|
| A sense of history  | Vicki Clements      |       |                           |                | history@bakewellu3a.org.uk   |
| Ancient Trackways   | John White          |       | 3 <sup>rd</sup> Monday    | 10 - 12 noon   | ancient.tracks@bakewellu3a.org.uk<br>Friends Meeting House, Bakewell |
| Art                 | Linda Fussey        |       | 2 <sup>nd</sup> Thursday  | 2 - 4 pm       | art@bakewellu3a.org.uk<br>Youlgrave Reading Room                     |
| Big Issues          | John Hooper         |       | 3 <sup>rd</sup> Thursday  | 10 - 12 noon   | bigissues@bakewellu3a.org.uk<br>Various homes                        |
| Birding Short Walks | Jane Burgess        |       | 1 <sup>st</sup> Tuesday   | Am             | birding@bakewellu3a.org.uk   |
| Bowling             | Mary Creswell       |       | Tuesdays<br>April - Sept  | 10 - 12 noon   | bowling@bakewellu3a.org.uk<br>Bakewell Bowling Club                  |
| Book group          | Jane Kayley-Burgess |       | 2 <sup>nd</sup> Tuesday   | 2 - 4 pm       | book.group@bakewellu3a.org.uk<br>Friends' Meeting House, Bakewell    |
| Bridge              | Trish Simmonds      |       | Every Thursday            | 1.30 - 4.30 pm | bridge@bakewellu3a.org.uk<br>Medway Centre                           |
| Chatsworth Group    | Peter Holt          |       |                           |                | chatsworth@bakewellu3a.org   |
| Cooking by Men      | Ainslie Kelly       |       | 2 <sup>nd</sup> Tuesday   | 5.30 - 7.30 pm | Lady Manners School<br>cooking.by.men@bakewellu3a.org.uk             |
| Craft               | Gill Roberts        |       | 2 <sup>nd</sup> Wednesday | 2 - 4 pm       | craft@bakewellu3a.org.uk<br>Friends' Meeting House                   |
| Environment Group   | Helen Parker        |       |                           |                | environment@bakewellu3a.org.uk                                       |

Phone numbers removed due to GDPR privacy issues.

| <b>Subject</b>                 | <b>Co-ordinator</b>            | <b>Phone</b>                                      | <b>Meeting day</b>        | <b>Time</b>                             | <b>Location</b>  |
|--------------------------------|--------------------------------|---|---------------------------|---|--|
| Gardens & Houses               | New ones needed                | Phone numbers removed due to GDPR privacy issues. | Various Tuesday visits    | Winter, 3 <sup>rd</sup> Tues, 3pm       | gardens.and.houses@bakewellu3a.org.uk                    |
| History Through Art            | Helen Parker                   |   |                           |   | historythroughart@bakewellu3a.org.uk                     |
| Luncheon Club                  | Anne Peller                    |   | 1st Wednesday             | Need you ask?                           | Various restaurants                                      |
| Nomadic 12/12 lunch            | Angus Stokes                   |   | 12 <sup>th</sup> of month | 12 noon                                 | nomaadiclunches@bakewellu3a.org.uk                       |
| Philosophy                     | Sam Lewis                      |   | 2 <sup>nd</sup> Wednesday | 10.00 - 12 noon                         | philosophy@bakewellu3a.org.uk                            |
| Photography                    | Neil Sharples<br>Allen Flatman |   | 1 <sup>st</sup> Friday    | 10.00 - 12 noon                         | photography@bakewellu3a.org.uk<br>Bakewell Parish Church |
| Poetry                         | Anne Gould                     |   | 2 <sup>nd</sup> Tuesday   | 2.00 pm                                 | poetry@bakewellu3a.org.uk<br>3 Brookside, Bakewell       |
| Keep using your French         | Liz Gelanos                    |   | 4 <sup>th</sup> Monday    | 2.30 - 4.30 pm                          | french@bakewellu3a.org.uk                                |
| Scrabble                       | Ros Stokes                     |   | 4 <sup>th</sup> Friday    | 2.00 - 4.00 pm                          | Friends' Meeting House                                   |
| Sharing my Garden              | Glenys Moore                   |   | 3 <sup>rd</sup> Tuesday   |   | Various gardens 01629 636477                             |
| Sketching for fun              | John Hooper                    |   | 1 <sup>st</sup> Thursday  | 1.45 - 4.00 pm                          | sketching@bakewellu3a.org.uk,<br>Rowsley Village Hall    |
| Social team and Meg Laird team |                                |   | 01629 636477              |   | social.team@bakewellu3a.org.uk                           |
| Spanish                        | Jayne Northcott                |   | Alternate Tuesdays        | 0.604167                                | Upstairs at Chakra Lounge, Bakewell                      |
| Theatre                        | Lindsay Jackson                |   | 2 <sup>nd</sup> Monday    | 2pm                                     | Friends' Meeting House                                   |
| Walking                        | Rosemary Wolfe                 | See programme in the Gazette                      |                           | Email: walking@bakewellu3a.org.uk       |  |
| Writing for Pleasure           | Pip Young                      | Resting   |                           | writing.for.pleasure@bakewellu3a.org.uk |  |

## **LONGER WALKS - Wednesday, Thursday, Friday**

**Week 1 - Wednesday 7 to 8 miles** A moderately paced walk over a variety of terrains. Picnic all year round, unless very inclement

**Organiser: Neil Sharples**

**Dates:** Wednesdays - 6 May, 3 June, 1 July, 5 August, 2 September

**Week 2 - Thursday, 7 to 8 miles,** at a moderate pace. Picnic all year round.

**Organiser: David Thornton**

**Dates:** Thursdays: 14 May, 11 June 9 July, 13 August, 10 September

**Week 3 - Friday, 4 miles** at a gentle pace. Pub or cafe lunch.

**Organiser: Rosemary Wolfe**

**Dates:** Fridays: 20 February, 20 March, 17 April, 22 May, 19 June



**Week 4 Wednesday, 7 to 8 miles**

Moderately paced, over a variety of terrains. Picnic all year round, unless very inclement.

**Organiser: Neil Sharples**

**Dates:** Wednesdays - 27 May, 24 June, 22 July 26 August, 23 September



## Cookery Corner

### *Boston Tarts*



Memories of my Grandma and my Mum, who both made these all the time. I always have to bake them to give to my son and daughter to take home, when they visit.

2 cups of plain flour  
2 teaspoons of baking powder  
8 oz margarine  
Half a cup of sugar  
Half a cup of ground rice  
1 egg



Rub margarine into the flour, baking powder and ground rice. Stir in the sugar and bind with the beaten egg. Roll out, not too thinly, and cut to fit a tart tin. Fill half with lemon curd and half with jam. Bake in a hot oven (mum used to bake them in a Yorkshire range oven, so no temperature or time stipulated). Keep your eyes on them. They will melt in your mouth.

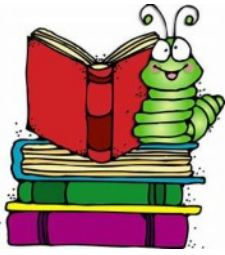
Thank you, **Irene Yarnell**

*(NB Weight of a cup of flour is about 4.5 ounces, or 125 grams, which just fitted into one of my smaller mugs Ed)*



***(Continued from Page 18)*** persuaded to change his name to Cliff Richard. And the story of a man who could jump backwards up onto his mantelpiece.

As might be expected, his photographs, and there were lots of them, were excellent. For me, it was a delightful trip around south Derbyshire with a clear-speaking, charming, humorous, speaker. Fortunately for us, he offers other talks, and I suspect he may feature on the Meg Laird programme again (latest news, he's booked for January 2027).



# Bu3a Book Group

## What have we been reading?

*Says coordinator, Jane*, the Book Group read “Angel” by Elizabeth Taylor for March. It is safe to say it promoted

much discussion about and around the novel, and an array of views. Here are what some of our readers said about the book. First a brief (I allowed it 75 words) summary from Google's artificial intelligence. I wonder if any of the reviews would encourage you to read the book.

**What AI came up with** - Elizabeth Taylor’s *Angel* (1957) is a masterful, darkly comic character study of the monstrously deluded Angelica Deverell.

A writer of lurid, historically inaccurate romances, Angel rises from poverty to eccentric wealth, sustained by an unshakeable belief in her own genius. Taylor’s exquisite, witty prose expertly balances satire with a surprising sense of pathos. While the protagonist is profoundly unlikeable, the novel is a brilliant exploration of the isolation and tragedy inherent in absolute self-absorption.

**DB** - This book is deservedly a classic. Written in 1957, it gives a magnificent portrayal of the life of a woman who we would now recognize as being on the neurodivergent spectrum, trying to use her skills to her best advantage, while failing to integrate with several of what we would consider normal aspects of life. It is beautifully sketched at a time before the conditions forming the spectrum of Autism were recognized or documented and the description has stood the test of time.



**DW** - I only read a couple of chapters because I couldn't bear to spend any more time with such an obnoxious, self centred character.

**SO** - I did wonder whether Angel may have been a kinder person if her childhood had been more family orientated, and she hadn't been left alone so much.

Poor Angel. She really didn't stand a chance, and her total lack of self-awareness didn't help!

*Jane Burgess*

## Keep an eye open for new neighbours?



Watch out for new people moving in, who might be interested in joining our Bu3a. If you let me know of new residents, I'll send them a Gazette with an explanatory note. Or you could invite them to a Meg Laird talk, or to try out a Group meeting. Email [email.the.gazette@googlemail.com](mailto:email.the.gazette@googlemail.com)



## Youlgrave Cinema

The film showing on

Friday, 8 May is

# The Last Journey

in the Village Hall, Holywell Lane, £5 entrance,  
Ice creams £1.50, before the film.

Try to bring correct cash, please.

**NB Last film of season, next one in September**



# A perfect birthday treat

Trips away can create good memories, and a recent one did just that. So good that it seems necessary to share it, in case members find themselves in the Penrith area, preferably, but not necessarily, to the south east - it depends how far you'd travel for a treat.

It was a garden centre which created the good memory, probably the best I have ever been in. It describes itself as “**Larch Cottage, Nurseries, Gallery, Restaurant and Shop**”. For anyone who's a proper, committed gardener/ plantsperson, the plants were



amazing, huge numbers (over 15,000), many varieties, wonderfully healthy, many propagated on site, the wooden shelving which contained them, stretching further than the eye could see. Not cheap, but as I visited on my birthday, it seemed a perfect reason for a few treats.



More garden ornaments than I've ever seen collected in one place, and, again, a huge variety, from life-size Roman centurions to crocodiles to lions, as well as

dozens of lovely, elegant statues. There are also permanent mature borders to wander among. In March, their hellebores were heart-stopping, so to speak.

Visit at the right time and you can dine al fresco in La Casa Verde, among hanging wisteria blossoms.



And then there was the shop, and the gallery, so interesting to wander around.

I'd love to have brought her home, she'd live very happily on my allotment, but, sadly, she wouldn't fit into the car.



### ***Sauce for the Goose***

*An elderly lady has expensive private health care. She receives a call from the doctor's receptionist. "Mrs Brown, you know the treatment you had recently for your rheumatism? Well, I'm sorry to have to tell you that your cheque has come back."*

*"That's all right, dear," replies Mrs Brown, "so has my rheumatism."*

### **Passing the buck**

A woman in her 60s takes her grown-up daughter to one side, wanting to explain why she's diabetic and says, "Darling, I don't want you to think I have diabetes because I'm fat. I have diabetes because it runs in our family."

Her daughter shakes her head in despair. "No, Mum, you have diabetes because no-one runs in our family."

I wandered lonely as  
a cloud

I wandered lonely as a cloud  
That floats on high o'er vales and  
hills,  
When all at once I saw a crowd,  
A host, of golden daffodils;  
Beside the lake, beneath the trees,  
Fluttering and dancing in the  
breeze.

Continuous as the stars that shine  
And twinkle on the milky way,  
They stretched in never-ending line  
Along the margin of a bay:  
Ten thousand saw I at a glance,  
Tossing their heads in sprightly  
dance.

The waves beside them danced;  
but they  
Outdid the sparkling waves in glee:  
A poet could not but be gay,  
In such a jocund company:  
I gazed - and gazed - but little  
thought  
What wealth the show to me had  
brought:

For oft, when on my couch I lie  
In vacant or in pensive mood,  
They flash upon that inward eye  
Which is the bliss of solitude;

*Song: "Orpheus with his  
lute made trees"*

(from Henry VIII)

Orpheus with his lute made  
trees,  
And the mountain tops that  
freeze,  
Bow themselves when he did  
sing:  
To his music plants and flowers  
Ever sprung; as sun and showers  
There had made a lasting  
spring.  
Every thing that heard him play,  
Even the billows of the sea,  
Hung their heads, and then lay  
by.  
In sweet music is such art,  
Killing care and grief of heart  
Fall asleep, or hearing, die.

William Shakespeare  
1564 - 1616

And then my heart with pleasure  
fills,  
And dances with the daffodils.

William Wordsworth,  
1770 - 1850

# POETRY

## On a Lane in Spring

A little lane - the brook runs close beside,  
And spangles in the sunshine,  
while the fish glide swiftly by;  
And hedges leafing with the green springtide;  
From out their greenery the old birds fly,  
And chirp and whistle in the morning sun;  
The pilewort glitter 'neath the pale blue sky,  
The little robin has its nest begun  
The grass green linnets round the bushes fly.  
How mild the spring comes in!  
The daisy buds  
Lift up their golden blossoms to the sky.  
How lovely are the pingles in the woods!  
Here a beetle runs - and there a fly  
Rests on the arum leaf in bottle-green,  
And all the spring in this sweet lane is seen

John Clare (1793-1864)

SPRING

## I Watched a Blackbird

By Thomas Hardy 1840 - 1928

*I watched a blackbird on a budding sycamore  
One Easter Day, when sap was stirring twigs to the core;  
I saw his tongue, and crocus-coloured bill  
Parting and closing as he turned his trill;  
Then he flew down, seized on a stem of hay,  
And upped to where his building scheme was under way,  
As if so sure a nest was never shaped on spray.*

## *Theatre Group's second Theatre Outing* *"Jane Eyre" at the Duchess Theatre, Chatsworth*

**Barbara and Malaika say:** An amazing evening at Chatsworth Theatre! Some of us saw our version of "Jane Eyre", with a background of Yorkshire Hills and Dales, cleverly created with yards of coloured material. Thunder and lightning, too!

The actors portraying Jane Eyre and Mr Rochester did a wonderful job of bringing the characters to life, with cheeky banter between them.

Unexpectedly, it was a musical! The songs were beautifully sung, and added a joviality to what can be a fairly sombre story.



The theatre itself was beautiful (although up 89 unforgiving stairs), and we were lucky enough to hear a talk beforehand about the history of the space. It was originally a ballroom which was converted into a theatre, the work begun by the 6<sup>th</sup> Duke but completed by the 8<sup>th</sup> Duke of Devonshire, when it was the

fashion to have a home theatre.

**Bernard says:** The Chatsworth Players gave us a performance of Jane Eyre that captured the essence of Charlotte Bronte's story of hardship, compassion, and ultimately happiness, presented in the remarkable Chatsworth House Theatre.

Before the performance we enjoyed a short talk about the theatre, its origins, its history and its new life in the present day.

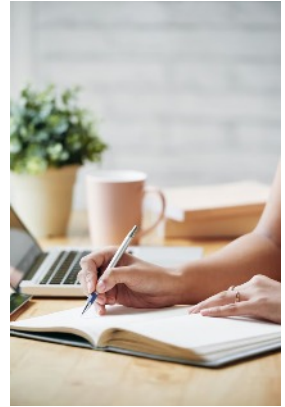
The cast worked incredibly hard and I certainly felt drawn into the storytelling and characters. The accompany music and songs worked and delivered an unusual representation of the play.

Congratulations to the Players and thanks to Lindsay Jackson for her hard work in building up the new Theatre Group for our membership.

## *Writing for Pleasure takes a sad rest*

It is with great sadness I am writing this notice  
Due to a natural decline, for different reasons, in the last 2 years, I have agreed with the two other group members to call a break for the time being, as it is not

really viable to continue with so few members. Despite one or two recent enquiries, unfortunately we have not been able to encourage others to join our ranks.



I shall remain the contact for any future enquiries, and yet again, urge anyone reading this to give thought to taking up pen and paper, or putting fingers to keyboard, and write something, anything, just for pleasure. It's easier than you think!

***Philippa Young - writing.for.pleasure@bakewellu3a.org.uk***



**Ainslie says:** At our March Group meeting our Theatre Group Leader, Lindsay Jackson, gave an authoritative and detailed talk about what it takes to put on a theatrical production, and followed this by arranging for 18 of us to attend a performance of “Jane Eyre” by The Chatsworth Players in Chatsworth's impressive Theatre.

This performance of Jane Eyre departed somewhat from the norm in that much of the dialogue was set as in a musical. A novel performance which we shall review at our next Group meeting at the Friends Meeting House, on Thursday, 28 May, 2 - 4 pm..

The Theatre Group is newly formed and proving to be hugely popular. Lindsay has compiled a varied and interesting programme for the year including live theatre.



# Members' Gardens

## Pat and Sam Lewis's Garden, Spring 2026

I visited Pat and Sam Lewis's garden on a bright April morning and was shown around by Pat. The house is in a prime position just under Longstone Edge, with uninterrupted views. From the back garden green fields lead up to the

Edge and Great Longstone is visible to the side. The front view leads down across the valley. They moved there 15 years ago, intending to add a limestone skin and insulation to external walls of the old bungalow. However, the foundations were too weak, the bungalow was demolished, and Sam helped to design a stylish house in keeping with the setting.

The front garden had been loved by its previous owner but he had become too old to manage it. It had been full of fritillaries which still flower haphazardly through the garden. Pat and Sam made adequate parking space, removed the lawn



and put a natural path through the resulting large flowerbed. The front garden is mostly flat and is now a large



bed divided by the path. The next thing they did was to choose some shrubs from a specialist (Bluebell) nursery. They also brought some shrubs from their old home in the Borders of Scotland. So, the bed has shrubs and a few well chosen trees spaced throughout. The under layer is mostly low and has the appearance of a rock garden with large clumps of plants which intermingle, such

as saxifrages, cowslips, primulas and forget-me-nots, periwinkles, Japanese anemones, and hellebores.

The soil is clay and there are thriving plants which should not grow there, like an azalea in full bud, and a rhododendron in a pot. Pat says some of her choicer plants were bought with tokens given by friends, and they remind her of them as she looks at the plants. Many of the plants are clearly grown to add colour as the seasons progress. Throughout the bed, the odd narcissus or tulip is growing to give height. The bed is allowed to seed and grow casually, but I suspect a great deal of effort has gone into it.



Sam and Pat are concerned about their impact on the environment. Natural materials were used and paths built with reused brick and crushed stone. They have solar panels and recently installed a heat pump which they are very pleased with. The back garden feels very different. Whilst the front garden is sheltered, the back reaches straight out with a view to Longstone Edge. It has magnificent views, but

is exposed to the elements, both wind and sun. There is a flowerbed with rocks taken from the front garden, which contains rock roses, hellebores, primroses, aubretia and geraniums, amongst other plants. A set of stone steps leads to an upper level, where most of the space is given over to vegetables and fruit. They grow peas, French beans and tomatoes, amongst other vegetable. There is a large strawberry patch with very healthy looking plants and a strip of raspberry canes. Pat laid an impressive path of small bricks, reused from the front garden.

On the highest level, adjoining the field wall, a sheltered wooden summer house looks straight out onto the Edge. There is a row of soft fruit: gooseberries and currants, and in the corner, a tall columnar Dawyck copper beech tree.



Pat has her sweet peas growing on a sunny window ledge in the house alongside some salad leaves ready for planting outdoors. I really enjoyed my visit to Pat and Sam's garden, and thank them for their warm welcome

***Alison Stuart***

# GARDENS, HOUSES AND ART SUMMER PROGRAMME



## Our visit to Arley Hall, Monday, 13 July

Enough of you have expressed an interest in this visit for it to go ahead! The gardens are some of the finest in Britain - 8 acres of formal garden and 7 acres of woodland. In the summer the walled garden and sun-dial garden come into their own, together with the magnificent herbaceous border and Arbour walk.

### Cost

Coach and driver's tip - £26

Entry to Gardens and Hall - £20

**Total Cost £46**



PLEASE send a cheque made out to Bakewell u3a Garden Group,  
to Kingswood  
Burton Close Drive  
Bakewell  
DE45 1BG

or you could bring it to the next Meg Laird on Thurs, 30th April.  
The cheque will secure your booking. I will not cash the cheques  
till nearer the time of the visit. Thank you.



*And it's goodbye from her . . .*

As I believe most of you already know, this is the last visit I shall be organising as coordinator of the Garden Group. It has been a rewarding experience as we have enjoyed many visits and Speakers together, but after 10 years, and with another birthday looming, I have decided it is time to resign.

I want to thank all of you who have helped, especially Viv, my fellow co-ordinator. Many of you have suggested places to visit, booking Speakers and, of course, making the tea! We have worked together to make the Group the success that it is. I sincerely hope the Group is able to continue, and am very happy to give any help I can to whoever is willing to take over.

(For the very last time) ***Sheila Sidebottom***

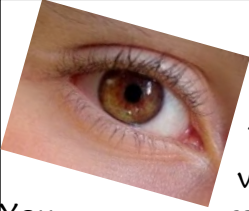


*A man phones his local builder and says to them, "Can I have a skip outside my house?" "Be my guest," replies the builder, "you just need a bit of old rope."*

*The technological advance I'm waiting for on my phone is the "get to the point" button.*

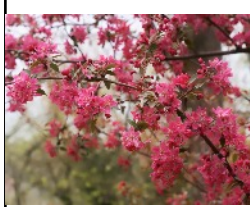
***Alicia Brandt***

# Look out!



You

can see the garden; there are



trees, maybe one or two cars; some houses,

maybe next door's garden? Oh, and there's a bird hopping across the lawn. Ah, now you're seeing a bit more. The bird on the lawn. A couple of jackdaws flying over, or a pigeon – there's always a pigeon. What about the sky where the birds are flying? Is it a beautiful blue, or dark grey, or different shades of white with a tinge of yellow or pink or green even. Any clouds will probably be moving across the sky – are they going rapidly or imperceptibly?



So you can see the garden out of your window: the lawn is green, I suppose, and perhaps yellowy green where moss is growing, and some bits are growing longer than others (perhaps you'd better get the lawnmower out when it's dry enough!).

Look at that tree that you've seen out there. How tall do you think it is? Some branches are probably longer than others, particularly on one side; and notice how the branches and twigs get thinner and thinner as they grow further out from the trunk. Are there



leaves on the tree? Ah, leaves. tree leaves come in all shapes and sizes and shades – what shapes are the leaves on the plants in the garden?



A lot of what you see out of the window may be a mixture of greys and greens, or browns. But you can always find splashes of colour if you look: the blue

top of a wheely bin, different flowers, a car's number plate, a robin redbreast. Every time you look out of that window, see if you can find something you haven't noticed before. Don't just look: SEE things. I know that some of us have less than perfect eyesight; but we can all acknowledge that the world out there is rich and varied. Aren't we lucky!!



***Rick Naylor***

**Meg Laird really does NEED you**

**MLT**

At the last Meg Laird planning meeting, the group was very keen to seek some help from some of you, perhaps slightly younger, fitter members.

A big of background about the Meg Laird Team - full of enthusiasm and ideas, some jolly good bakers, very willing, but sadly, not always able. Our average age is over 80 and some of the physical tasks connected with putting on a Meg Laird talk are getting beyond some of us. And we're not getting any younger, so looking to the future, we really do need a few younger members to be willing to join the ML Group and join in making sure the Meg Laird talks (which began in 2014) can continue.

It's not that we're wanting to hand over and give up, we just DO need a few more helpers. We have 4 talks each year, a Christmas event, and a Charity Coffee Morning. We have very convivial meetings to plan, at Anne Peller's home, and she does very good coffee and lovely biscuits. So it isn't a huge commitment. Please think about whether you can offer some help. And, of course, none of us are expected to be available for every event - as long as enough of us are.

**Please get in touch - 01629 636477 for a chat, or  
email.the.gazette@googlemail.com.**



## The Gardening Doctor

Do you suffer from PLUMBAGO?  
Is your back a little sore?  
Or perhaps it's PYRACANTHUS  
Which you caught in Singapore?  
You've a nasty little HOSTA  
Which I think I'll have to lance  
And I notice a SPIREA  
Has been leading you a dance!  
Are you getting forgetful?  
Is NEMESIA the cause?  
Does your ANTHRRHINUM pain you  
When you're walking out of doors?  
You've had SKIMMIA RUBELLA  
I can see that by your nose  
And CORNUS CAPITOSA  
Has played havoc with your toes!  
How is your VIBURNUM TINUS?  
Have you lost your sense of smell?  
Use a SYRINGA REFLEXA  
That should help to keep it well.  
I'm afraid your MACROCARPUS  
Isn't really up to scratch  
And do avoid NIGELLA  
It's a nasty thing to catch!  
Still, I think you're doing nicely  
Watch the QUERCUS in your knees  
Take your BERBERIS twice nightly  
Cheerio! Next patient please!

*Thanks to Jen Coffey for this visit to the Surgery. Ed*

## **Bakewell Area U3A - Registered Charity No 1111699**

# **YOUR OFFICERS AND COMMITTEE**

The members of the committee of the Bakewell Area U3A are ex-officio the Trustees of this Bakewell U3A Trust No 1111699. The Trustees are answerable and accountable for the finances, activities and publications of the Trust. There is a link to our data protection policy on the members' page of the BU3A website.

### **Chairman**

Peter Holt  
chair@bakewellu3a.org.uk

### **Secretary**

Richard Tucker  
secretary@bakewellu3a.org.uk

### **Database Co-ordinator**

Phil Clarke  
database@bakewellu3a.org.uk

### **Membership Secretary**

David Thornton  
membership@bakewellu3a.org.uk

### **Committee Members**

Pam Walker

### **Vice Chairman**

Vacant  
vicechair@bakewellu3a.org.uk

### **Treasurer**

Kath Hopkins  
treasurer@bakewellu3a.org.uk

### **Gazette Editor**

Glenys Moore  
email.the.gazette@googlemail.com

### **Website Manager**

Andy Roberts  
web.admin@bakewell  
U3A.e4ward.com

Ainslie Kelly (Liaising with Group Coordinators)  
groups@bakewellu3a.org.uk

There are vacancies for committee and co-opted members. Please contact the Secretary if you would like more information.

**Website: [bakewell.u3asite.uk](http://bakewell.u3asite.uk)**

**Bakewell U3A warmly welcomes all new members. Please contact the Membership Secretary for more information. The Membership form can be downloaded from our website. Forms are also held at the Library, the Medway Centre and the Information Centre. Completed membership forms should be sent to D Thornton, 2 Burton Closes Mews, Bakewell DE45 1AG**

# Your Gazette at a glance



|               |  |
|---------------|--|
| Page 1        | Garden Group                               |
| Page 2/3      | Our Chairman's remarks                     |
| Page 4        | Editor's ponderings                        |
| Page 5        | The next Meg Laird Talk - Piano and tea    |
| Page 6        | Thank yous                                 |
| Page 7        | AGM report                                 |
| Page 8        | Bowls Group                                |
| Page 9/10     | Chatsworth Group programme                 |
| Page 11-13    | Getting to know Peter Holt                 |
| Page 14/15    | Environment Group meeting - Report         |
| Page 16/17    | Garden Sharing Group - Report              |
| Page 18       | Meg Laird Speaker, Ashley Franklin, Report |
| Pages 19 & 22 | Walking group information                  |
| Page 20/21    | Middle pages, Group information            |
| Page 23       | Cookery Corner                             |
| Page 24       | A Book Review from the Book Group          |
| Page 26/27    | Larch Cottage, A gardener's treat          |
| Page 28/29    | Spring poetry                              |
| Page 30       | Theatre visit - a report                   |
| Page 30/31    | Wintry poetry                              |
| Page 31       | Writing for Pleasure takes a rest          |
| Page 32/33    | A Members' Garden from Alison              |
| Page 34/35    | Gardens and Houses programme               |
| Page 36       | Rick Naylor says "look out"                |
| Page 37       | Meg Laird needs you                        |
| Page 38       | The gardening doctor f                     |
| Page 39       | The official stuff                         |